



GMT MONTHLY MEMBERSHIP PROGRESS REPORT

Results as of: 5/31/2020

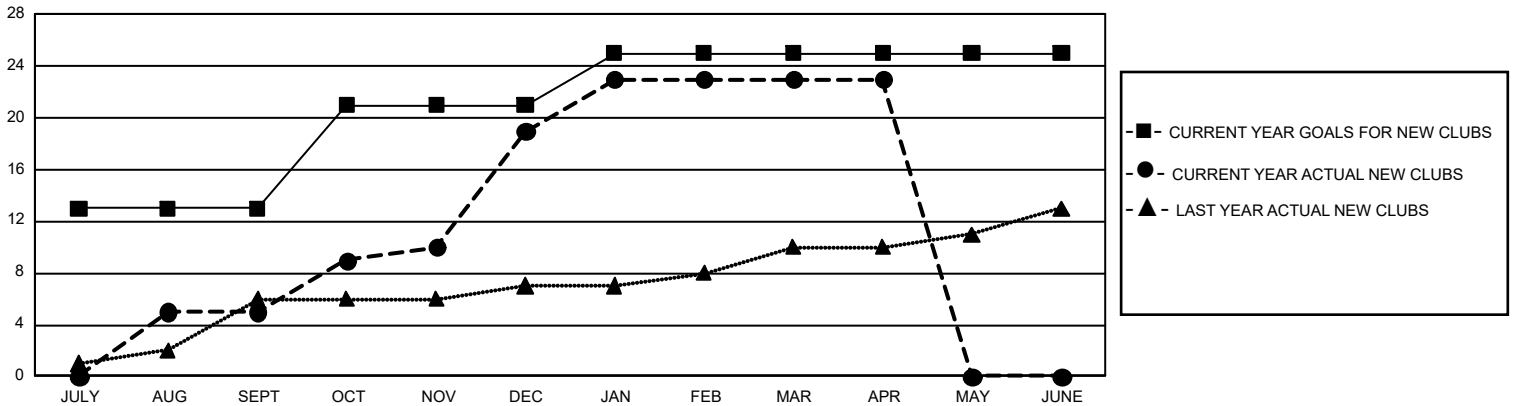
GMT Constitutional Area 5 - K, Group L

GMT: OPEN

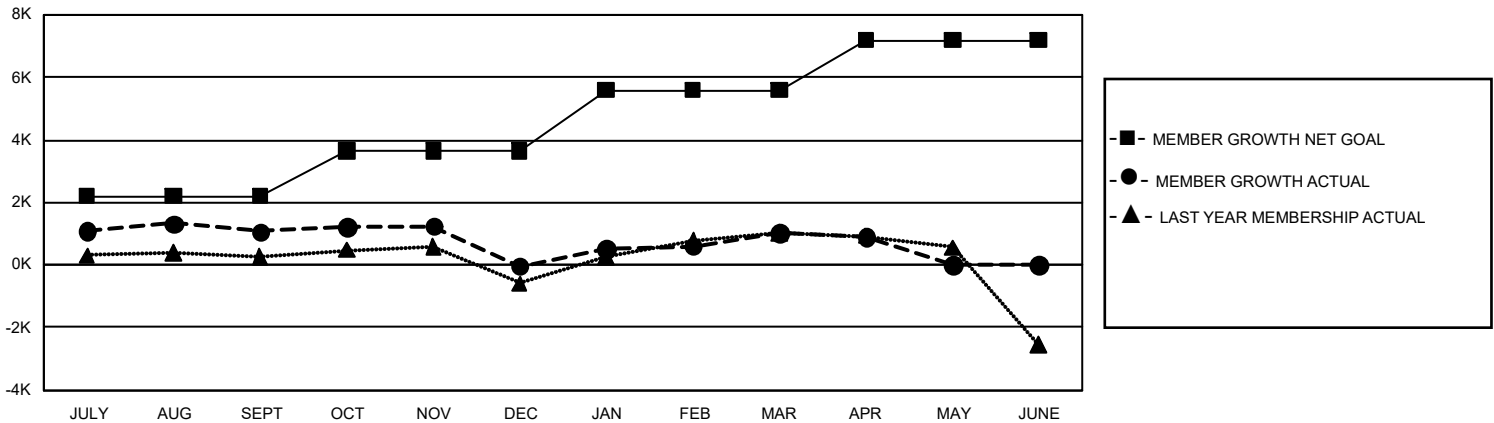
REPORT DOES NOT INCLUDE CLUBS IN UNDISTRICTED AREAS.

| Clubs | | | | Members | | | |
|-----------------------|---------------|-----------|---------------|-----------------------|------------------------|----------------------|--|
| RESULTS FOR 2019-2020 | | | | RESULTS FOR 2019-2020 | | | |
| QUARTER | NEW CLUB GOAL | NEW CLUBS | DROPPED CLUBS | QUARTER | MEMBER GROWTH NET GOAL | MEMBER GROWTH ACTUAL | DROPPED MEMBERS ACTUAL (including transfers) |
| JULY/AUG/SEPT | 39 | 5 | 3 | JULY/AUG/SEPT | 6,630 | 2,781 | 1,620 |
| OCT/NOV/DEC | 24 | 14 | 1 | OCT/NOV/DEC | 4,350 | 2,008 | 3,073 |
| JAN/FEB/MAR | 12 | 4 | 25 | JAN/FEB/MAR | 5,820 | 1,863 | 667 |
| APR/MAY/JUNE | 0 | 0 | 0 | APR/MAY/JUNE | 4,770 | 152 | 249 |

GOALS AND ACTUAL NEW CLUBS CUMULATIVE



GOALS AND ACTUAL MEMBERS CUMULATIVE



| | | | |
|--------------------------|--|---------------------------------------|-----------------|
| DROPPED CLUBS: 29 | 923 CLUBS OF 1,075 ADDED 1 OR MORE NEW MEMBERS | GENDER DISTRIBUTION | |
| DROPPED MEMBERS | | MALE | 35,655 (71.44%) |
| DECEASED | 98 | FEMALE | 14,252 (28.56%) |
| CLUB CANCELLED | 55 | TOTAL FAMILY UNIT MEMBERS 5,665 | |
| OTHER | 5,456 | FAMILY MEMBERS PAYING HALF DUES 3,342 | |
| TOTAL | 5,609 | | |

[CLICK HERE FOR CUMULATIVE MEMBERSHIP DATA](#)